

FIG. # 1
ORIGINAL DESIGN

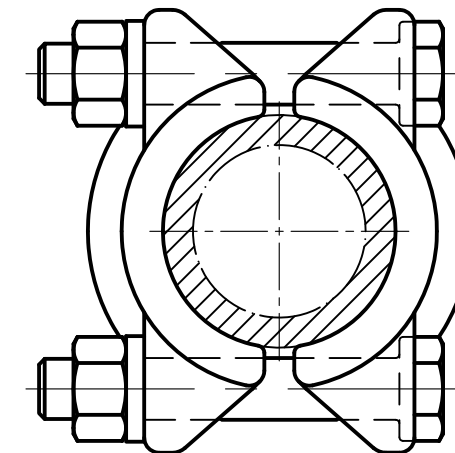
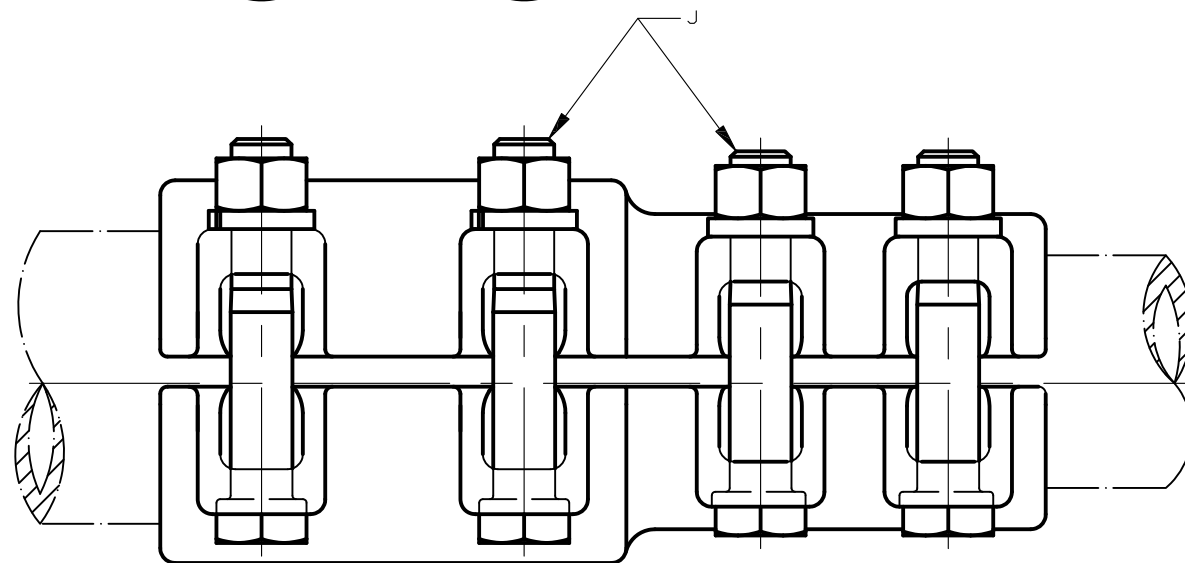


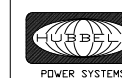
FIG. # 2
PRESENT DESIGN

TOLERANCE CHART		
LESS THAN 2"	2"-6"	GREATER THAN 6"
±.031	±.063	±.125
ANGULAR TOLERANCE ±1°		

NOTES:
 1. MATERIAL: ELEC. BRZ.
 2. HARDWARE: SILICON BRONZE.
 3. TO OBTAIN SILICON BRONZE
 HARDWARE ADD SUFFIX "ED".
 EX) STTH-2424-ED

67818	12/23/2016	RK	HG
EC #	DATE	CHG BY	RESP ENG
DESC OF DWG: REDRAW IN AUTOCAD			
REASON (S) FOR CHANGE: --			
DISPOSITION OF MAT'L: --			

ANDERSON*



HUBBELL® POWER SYSTEMS

CONFIDENTIAL: THIS DRAWING AND ITS
 CONTENTS ARE CONFIDENTIAL AND THE
 EXCLUSIVE PROPERTY OF HUBBELL
 POWER SYSTEMS. NO PUBLICATION,
 DISTRIBUTION OR COPIES MAY BE MADE
 WITHOUT THE WRITTEN CONSENT OF
 HUBBELL POWER SYSTEMS.
 HUBBELL POWER SYSTEMS UNPUBLISHED.
 ALL RIGHTS RESERVED UNDER THE
 COPYRIGHT LAWS.

TITLE COUPLER REDUCER I.P.S. TO I.P.S.			
SIZE C	DWG NO. C-4078	CAT / PART / ASSY NO. STTH	REV 19
DO NOT SCALE THIS DRAWING	DRN BY WDS	DATE 12/28/54	SHEET 1 OF 2

CATALOG NUMBER	CONDUCTOR SIZE		DIMENSION IN INCHES						FIG. NO.
	MAIN	TAP	A	B	C	D	D-1	J	
STTH-0604	3/4	1/2	2 1/2	5 1/4	2 1/2	3	2 11/16	1/2	2
STTH-0606	3/4	3/4	2 1/2	5 1/16	2 1/2	3 1/16	3 1/16	1/2	2
STTH-1004	1	1/2	2 1/2	5 1/4	2 1/2	3 3/16	2 11/16	1/2	1
STTH-1006	1	3/4	2 1/2	5 1/4	2 1/2	3 3/16	3	1/2	2
STTH-1010	1	1	2 1/16	5	2 1/16	3 3/16	3 3/16	1/2	1
STTH-1206	1 1/4	3/4	2 3/4	5 1/2	2 1/2	3 9/16	3	1/2	2
STTH-1210	1 1/4	1	2 3/4	5 3/8	2 1/2	3 9/16	3 3/16	1/2	2
STTH-1212	1 1/4	1 1/4	2 3/4	5 5/8	2 3/4	3 9/16	3 9/16	1/2	2
STTH-1406	1 1/2	3/4	2 3/4	5 1/2	2 1/2	3 13/16	3	1/2	2
STTH-1410	1 1/2	1	2 5/16	5	2 5/16	3 13/16	3 3/16	1/2	1
STTH-1412	1 1/2	1 1/4	2 3/4	5 5/8	2 3/4	3 13/16	3 9/16	1/2	2
STTH-1414	1 1/2	1 1/2	2 5/8	5 5/8	2 5/8	3 11/16	3 11/16	1/2	1
STTH-2006	2	3/4	2 1/4	4 15/16	2 5/16	4 1/2	2 15/16	1/2	1
STTH-2010	2	1	2 5/16	5	2 5/16	4 3/8	3 3/16	1/2	1
STTH-2012	2	1 1/4	2 5/8	5 5/8	2 5/8	4 1/2	3 3/8	1/2	1
STTH-2014	2	1 1/2	2 5/8	5 5/8	2 5/8	4 3/8	3 13/16	1/2	1
STTH-2020	2	2	2 5/8	5 5/8	2 5/8	4 1/2	4 1/2	1/2	1
STTH-2406	2 1/2	3/4	3 1/4	6 5/32	2 1/2	4 3/4	3	1/2	2
STTH-2410	2 1/2	1	3 1/4	6 1/4	2 1/2	4 3/4	3 3/16	1/2	2
STTH-2412	2 1/2	1 1/4	3 1/4	6 1/32	2 3/4	4 3/4	3 9/16	1/2	2
STTH-2414	2 1/2	1 1/2	2 5/8	5 5/8	2 5/8	4 3/4	3 11/16	1/2	1
STTH-2420	2 1/2	2	2 5/8	5 5/8	2 5/8	4 3/4	4 1/2	1/2	1
STTH-2424	2 1/2	2 1/2	2 5/8	5 5/8	2 5/8	4 13/16	4 13/16	1/2	1
STTH-3010	3	1	3 1/2	6 3/4	2 1/2	5 7/16	3 3/16	1/2	2
STTH-3012	3	1 1/4	2 1/2	5 5/8	2 1/2	5 1/4	3 3/8	1/2	1
STTH-3014	3	1 1/2	2 1/2	5 5/8	2 1/2	5 1/4	3 11/16	1/2	1
STTH-3020	3	2	2 5/8	5 5/8	2 5/8	5 1/4	4 1/2	1/2	1
STTH-3024	3	2 1/2	2 5/8	5 5/8	2 5/8	5 1/2	4 13/16	1/2	1
STTH-3030	3	3	3 1/2	7 1/2	3 1/2	5 13/16	5 13/16	5/8	2
STTH-3412	3 1/2	1 1/4	3 1/2	6 1/2	2 1/2	6 1/16	3 3/8	1/2	2
STTH-3414	3 1/2	1 1/2	3 1/2	7 1/4	3 1/4	6 1/16	3 13/16	1/2	2
STTH-3420	3 1/2	2	3 1/2	6 5/8	2 5/8	6 1/16	4 1/2	1/2	2
STTH-3424	3 1/2	2 1/2	3 1/2	6 5/8	2 5/8	6 1/16	4 13/16	1/2	2
STTH-3430	3 1/2	3	3 1/2	7 1/8	3 1/2	6 5/16	5 13/16	5/8	2
STTH-3434	3 1/2	3 1/2	3 1/2	7 1/4	3 1/2	6 5/16	6 5/16	5/8	2
STTH-4014	4	1 1/2	2 1/2	5 5/8	2 1/2	6 9/16	3 11/16	1/2	1
STTH-4020	4	2	2 1/2	5 5/8	2 1/2	6 9/16	4 1/2	1/2	1
STTH-4024	4	2 1/2	2 1/2	5 5/8	2 1/2	6 9/16	4 13/16	1/2	2
STTH-4030	4	3	4	7 5/8	3 1/2	6 15/16	5 13/16	5/8	2
STTH-4034	4	3 1/2	4	8 1/32	3 1/2	6 15/16	6 5/16	5/8	2
STTH-4040	4	4	3 1/4	6 3/4	3 1/4	6 15/16	6 15/16	5/8	1
STTH-0404	1/2	1/2	2 3/8	4 13/16	2 3/8	2 15/16	2 15/16	1/2	1
STTH-0404-3	1/2	1/2	2	4 3/8	2	2 1/4	2 1/4	3/8	1
STTH-1404	1 1/2	1/2	2 1/2	5 1/2	2 1/2	3 13/16	2 11/16	1/2	1
STTH-5030	5	3	5 1/8	9	3 1/4	8 1/4	5 13/16	5/8	2
STTH-3004	3	1/2	3 1/2	6 5/8	2 1/2	5 7/16	2 11/16	1/2	2
STTH-8080	8	8	8	16	8	11 5/16	11 5/16	5/8	2

TOLERANCE CHART		
LESS THAN 2"	2"-6"	GREATER THAN 6"
±.031	±.063	±.125
ANGULAR TOLERANCE ±1°		

67818	12/23/2016	RK	HG
EC #	DATE	CHG BY	RESP ENG
DESC OF DWG: REDRAW IN AUTOCAD -- -- -- REASON (S) FOR CHANGE: -- DISPOSITION OF MAT'L: --			

ANDERSON®

CONFIDENTIAL: THIS DRAWING AND ITS CONTENTS ARE CONFIDENTIAL AND THE EXCLUSIVE PROPERTY OF HUBBELL POWER SYSTEMS. NO PUBLICATION, DISTRIBUTION OR COPIES MAY BE MADE WITHOUT THE WRITTEN CONSENT OF HUBBELL POWER SYSTEMS. HUBBELL POWER SYSTEMS UNPUBLISHED. ALL RIGHTS RESERVED UNDER THE COPYRIGHT LAWS.

HUBBELL® POWER SYSTEMS

TITLE: COUPLER REDUCER I.P.S. TO I.P.S.

SIZE	DWG NO.	CAT / PART / ASSY NO.	REV
C	C-4078	STTH	19

DO NOT SCALE THIS DRAWING | DRN BY WDS | DATE 12/28/54 | SHEET 2 OF 2